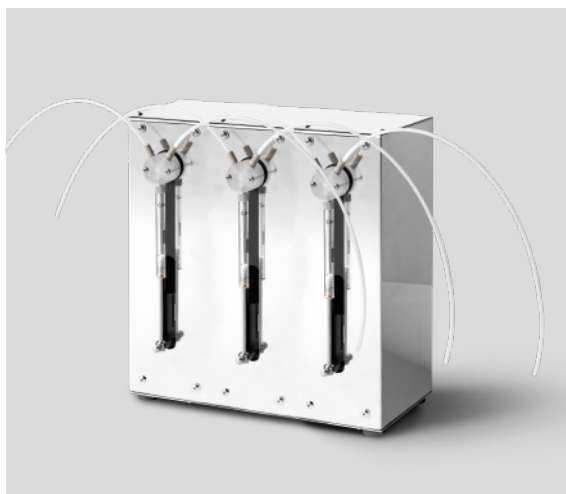


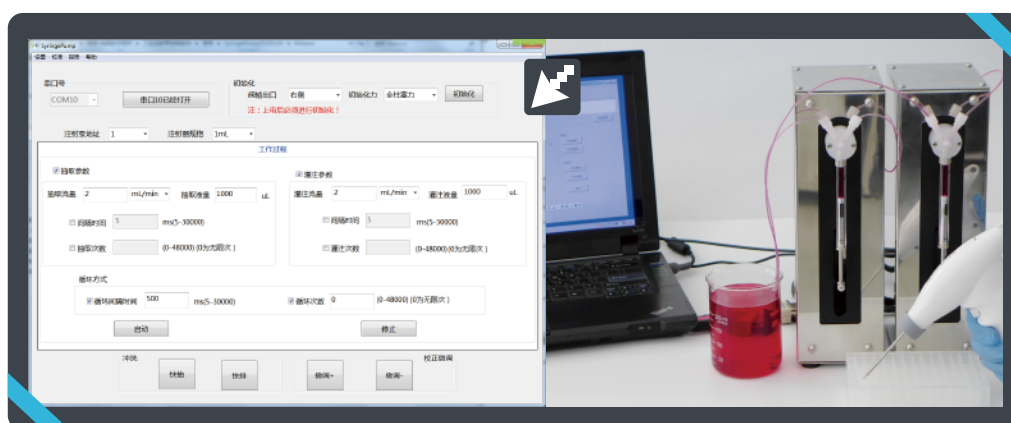
Dilution Syringe Pump ASD60-III



Introduction

ASD60-III syringe pump is a programmable precision liquid handling device. Linear speed range: 0.01mm/s-60mm/s. Controlled by computer or microcontroller, replace the traditional operation of diluting and dispensing. Widely used in blood, chemistry, food and environment analysis.

Interface Display



Technical Specifications

Accuracy	Error $\leq \pm 0.1\%$ (stroke $\geq 30\%$ maximum stroke)
Plunger drive	Stepper motor driven lead screw with optical encoder for step loss detection and home flag
Max. stroke(Steps)	60mm (6000 steps or 48000 steps)
Linear speed range	0.01mm/s-60mm/s
Run time per stroke	1.25s-100min
Speed resolution	0.01mm/s
Stroke resolution	0.01mm or 0.00125mm
Valve switch time	≤ 250 ms between adjacent ports
Valves type	3 port valve, 4 port valve, 3 port distribution valve, 9 port distribution valve
Tubing fittings	1/4-28UNF
Syringe fittings	1/4-28UNF
Syringes	50 μ L, 100 μ L, 250 μ L, 500 μ L, 1.0mL, 2.5mL, 5.0m, 10mL, 25mL
Max. pressure	0.68MPa(High pressure above 0.68MPa, please contact us)
Syringe material	Barrel material: Borosilicate glass
	Plunger rod material: Stainless steel
	Plunger seal material: PTFE
Power supply	DC24V $\pm 10\%$ /1.25A(Peak value)
Communication interface	RS232/RS485/CAN
Baud rate	9600 or 38400(RS232/RS485); 100K, 125K, 250K, 500K, 1M(CAN)
Addressing	UP to 15 individual addresses available(BCD switch)
Input	Two TTL level signal inputs, for restart the paused instruct
Output	Three TTL level signal outputs, for synchronous external devices
Condition temperature	15°C-40°C(Low temperature operation requires a low temperature syringe)
Storage temperature	-20°C -65°C
Dimension(mm)	303*161.9*297.5mm
Weight	7.0kg

Dimension Drawing (Unit:mm)

